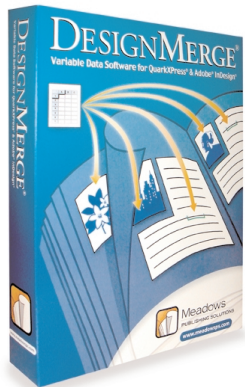


# DESIGNMERGE®

Variable Data Software for QuarkXPress® & Adobe® InDesign®



## Features

- Works with standard QuarkXPress or InDesign documents
- Supports hundreds of variable text, article and picture links per document
- Utilizes a simple, intuitive, menu-driven user interface
- Incorporates easy to use step-and-repeat capability for multiple-up layouts
- Includes on-the-fly copy fitting of overset boxes (CopyFit Module)
- Includes advanced conditional logic capabilities (Rules Module)
- Advanced Preview, Preflight, and Testing features
- Provides special print drivers for PPML, Fiery, PostScript, and VPS
- Includes a 200-page printed manual and tutorial
- Available for Mac or Windows



**Meadows**  
PUBLISHING SOLUTIONS  
1305 Remington Road, Suite G  
Schaumburg, IL 60173

## DesignMerge® Pro Bundle

Professional variable data printing software for QuarkXPress® & Adobe® InDesign®

The **DesignMerge®** Professional Bundle is a suite of software that has been integrated directly with QuarkXPress® and Adobe® InDesign® to provide sophisticated variable data printing, and data publishing features.

**DesignMerge** works with existing documents, using a palette interface that allows the user to easily define variable elements anywhere on the page. **DesignMerge** can merge text, picture, multi-line article, or even full page information using data taken from practically any source. The data is merged directly into QuarkXPress or InDesign layouts to produce unique, personalized output in a variety of different file and VDP formats, including PostScript, PDF, PPML, Creo VPS, and Xerox VIPP.

The entire process is menu-driven, very flexible, and incredibly easy to use. Most importantly, because **DesignMerge** uses the QuarkXPress or InDesign composition engine, your VDP output will be exactly what you might expect – fast, reliable, and “predictable”.

The Pro Bundle also includes our **CopyFit™** software, which provides advanced on-the-fly copy fitting capability, **Sequencing** capability allows the creation of multi-up “Cut & Stack” output, and the **DesignMerge Rules Module**, which can be used to implement sophisticated conditional logic (if/then/else) processing.

## DesignMerge Options

- **Bar Code Module:** Provides support for a number of popular bar code formats, including UPC, Code 128, Code 39, Codabar, EAN, ISBN, MSI-Plessey
- **AppleScript Module:** Provides a special AppleEvent dictionary that can be used to control DesignMerge or to create special user-defined “Actions”
- **Data-Driven Graphics:** Create custom Pie, Bar, and Line chart graphics compatible with any PostScript printer

## Industry-Specific Applications

- **Digital Printing Companies:** Provide personalization and customization services to your customers. Customize brochures, direct mail pieces, business cards, name badges, and other marketing collateral.
- **Retailers:** Produce updated shelf tags, coupons and POP material
- **Financial Institutions:** Produce updated fund statements and fact sheets, customized prospectuses, and other financial documents
- **Catalogers:** Automate the process of customized catalog page layout and product specification sheets

## Additional Functionality

Included with the DesignMerge Pro Bundle

### Options

#### Printer Drivers

DesignMerge provides built-in support for PostScript, PPML, and Creo VPS output. Xerox VIPP is also available as an optional module.

#### Bar Code Module

This module provides support for a number of popular bar coding formats, including Code 128, Code 39, Code 93, Codabar, UPC, EAN, ISBN, I 2 of 5, MIS-Plessey, and PostNet. This module also ships with a free set of bar code fonts.

#### AppleScript Module

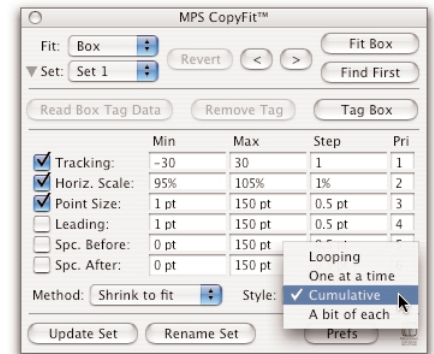
This product allows DesignMerge to be controlled and directed from within the AppleScript environment. In addition, the interface allows the user to create their own custom "Actions" that can be triggered during a merge session. This means that every aspect of the document can be controlled by the merge.

#### Data-Driven Graphics

DesignMerge provides a number of options for creating data-driven Pie, Bar, or Line charts in your QuarkXPress or InDesign layouts. Please contact our sales department for more information about our data-driven graphics capabilities.

### MPS CopyFit™ Module

Automatically remedies text "overflow" conditions within a QuarkXPress or InDesign text box, which can result in data that is "clipped," or not visible at all on the printed piece. The product works by modifying overset (or underset) text within the document using a set of attribute parameters (point size, scaling, leading, etc.) as a guide. All of the **CopyFit** parameters are user-definable, and can be saved as sets. Each box in your layout can have its own set of copy fitting parameters, and all settings are saved with the document. You can also choose from one of several pre-defined "Fit Styles" that ensure an aesthetically pleasing result.

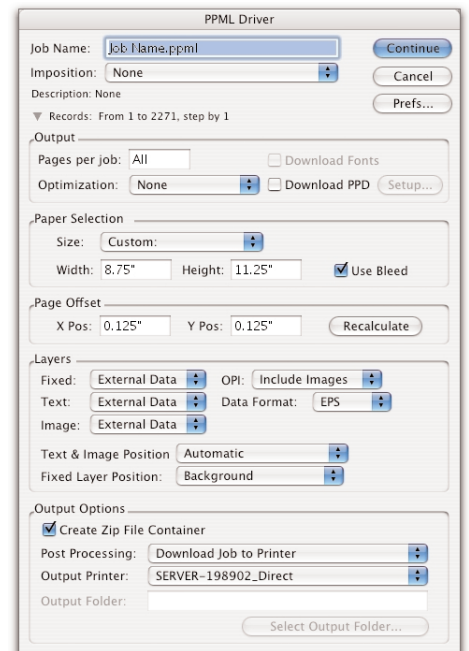


### DesignMerge® Rules Module

This module provides powerful, conditional processing features. Conditional processing (if-then-else statements) provide the ability to perform specific actions based upon the contents of one or more database fields. The interface for the Rules Module is completely menu-driven – there is no need to "hand code" conditional statements. Rules can be applied to individual Variable Links, Boxes, or document pages, and each rule can trigger one or more possible "Actions," which can be configured to modify virtually any aspect of the document styling or layout. The Rules Module also includes several unique testing and debugging features that allow the user to interactively preview and test their Rules using live data.

### PPML Print Driver

The DesignMerge PPML Driver generates optimized variable print output that is compatible with all PPML printers, including those from Canon, HP, Konica-Minolta, Océ, Ricoh, Xeikon, and Xerox. The driver supports a robust PPML feature set, including the ability to create reusable objects such as background forms and variable images. The latest version now includes the exclusive DesignMerge "VDP Optimizer" technology, which ensures the fastest possible throughput for all PPML systems.



To learn more about DesignMerge® software, please visit us at [www.meadowsp.com](http://www.meadowsp.com)